

Made Tough Success Story



Compared to many other pumping applications, pumping silty water is relatively easy for a GPM-Eliminator pump. Even so, they had never heard of a pump working for a quarter century without manufacturer’s service maintenance.

Everlasting Pumps: GPM-Eliminator™ Pumps Outperform the Rest

It was a rare situation. Our customers were astounded, and we admit we were a little impressed too.

We had a GPM-Eliminator™ pump arrive at our Duluth Service and Repair Center for manufacturer’s service maintenance. It was an older model. So old, we had to dig deep into our archived records to piece together the history of the pump.

We hadn’t seen this pump since the original three-pump sale in the early 90s. No maintenance. No tune-ups. No problems in over twenty-five years. The other two pumps are still in operation, with no signs of slowing down.

We knew our GPM-Eliminator pumps were Made Tough™. In this case, Made Tough meant exceeding the customer’s expectations many times over.

The Everlasting GPM-Eliminator – Taconite Mining in Minnesota

In 1991, GPM shipped three GPM-Eliminator pumps to a taconite mining plant in northern Minnesota. They were destined for the thickener underflow application, where they’d pump silty water out of the customer’s mining applications. Two of the pumps were installed in 1991, and the third was installed when it was needed for operation demand in 1993.

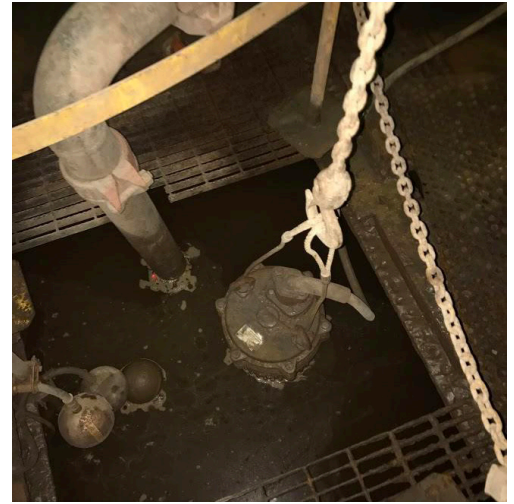
Until now, that was the last we’d heard of those three pumps.

After over 25 years of pumping silty water under the mine plant’s thickener, one of the 15 horsepower pumps started chugging. It slowed down. It stopped working. Workers were shocked the reliable pump was having trouble. They sent it to GPM’s Service and Repair Center for manufacturer’s service maintenance, which is when the team noticed the pump had never returned to the shop. It hadn’t been touched by a mechanic in a quarter century.

By inspecting the pump, the GPM service team determined it was built and shipped to the mine in 1991. It had been operating with an older style motor that had been phased out in 1998, when GPM started building the motors in-house.



Made Tough
Success Story



Building motors in-house improved performance, and allowed GPM to control manufacturing costs, engineer a more robust mechanical seal and increase L/D ratio and lead times on new units.

The customer was beyond satisfied with the pump's longstanding performance, and they were more than happy to upgrade to a modern, GPM-made motor before putting the pump back to work at the plant. We'll see them in a few years for a routine tune up. As for the other two pumps in operation for over 25 years, we'll see...

GPM-Eliminator – Made Tough™

It's not every day that GPM sees a twenty-five-year-old pump come into our Service and Repair Center for the first time – especially one needing only a quick replacement before going back into the field.

We considered rebranding the GPM-Eliminator to the The Everlasting GPM-Eliminator Pump, but it doesn't roll off the tongue quite as nicely.

Rest assured, no matter what you pump with your GPM-Eliminator, it too can be everlasting. Our pumps are Made Tough, but don't expect every pump to last over twenty years untouched. Proper care and manufacturer's service maintenance is critical in extending the usable life of your investment.



For more information contact:

service@gpmco.com

GPM, Inc.

4432 Venture Ave.

Duluth, MN 55811

218-722-9904

www.gpmco.com