





## Dewatering Done Better

**A DEWATERING SOLUTION** utilizing a GPM-Eliminator™ submersible pump, or one of the leading brands we represent, will give greater reliability than a standard dewatering pump. That equates to reduced downtime, increased productivity and controlled costs.

Trusted by hundreds of cost-conscious customers throughout North America, GPM offers a full spectrum of capabilities as the manufacturer of GPM-Eliminator™-branded submersible pumps, a distributor of leading industrial equipment brands and provider of world-class service and repair.




GPM takes pride in the integrity of our products and solutions. Our customers trust us to deliver superior quality across a multitude of custom-engineered solutions.

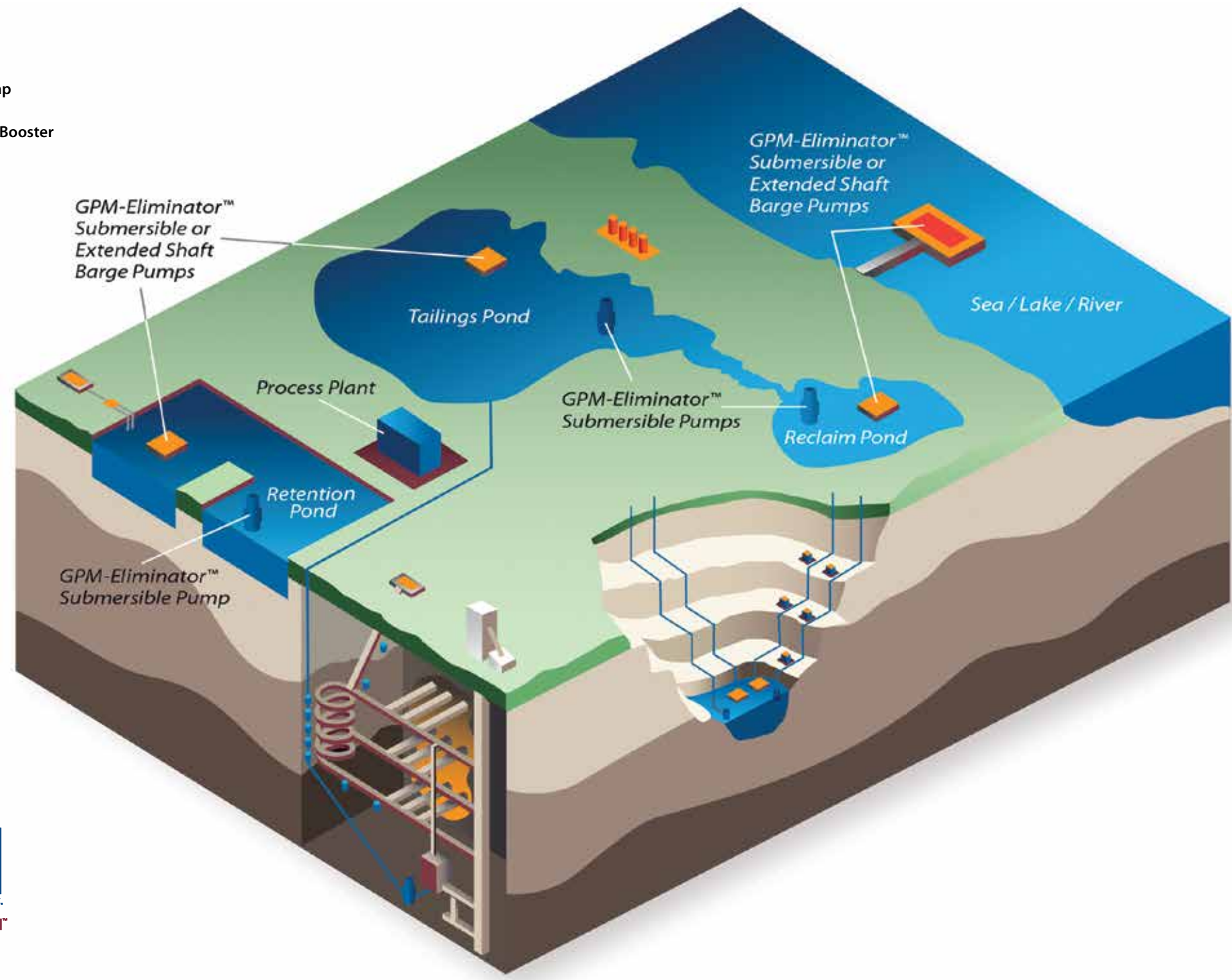
### **GPM provides complete dewatering solutions.**

From single dewatering pumps to comprehensive dewatering systems. No matter the dewatering environment, GPM has the expertise and the capability to provide a cost-effective solution.

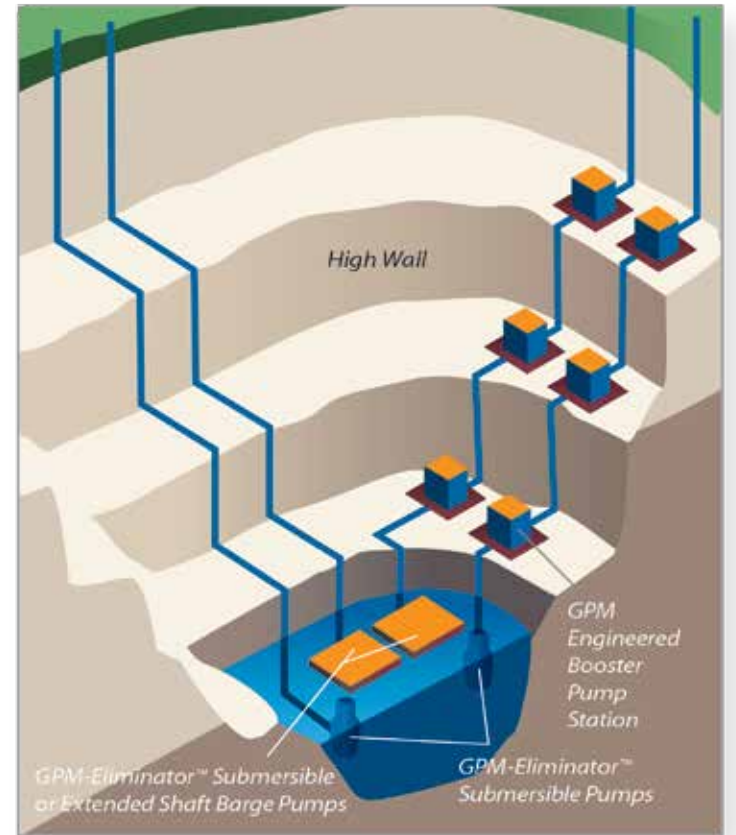


# Typical Dewatering Applications

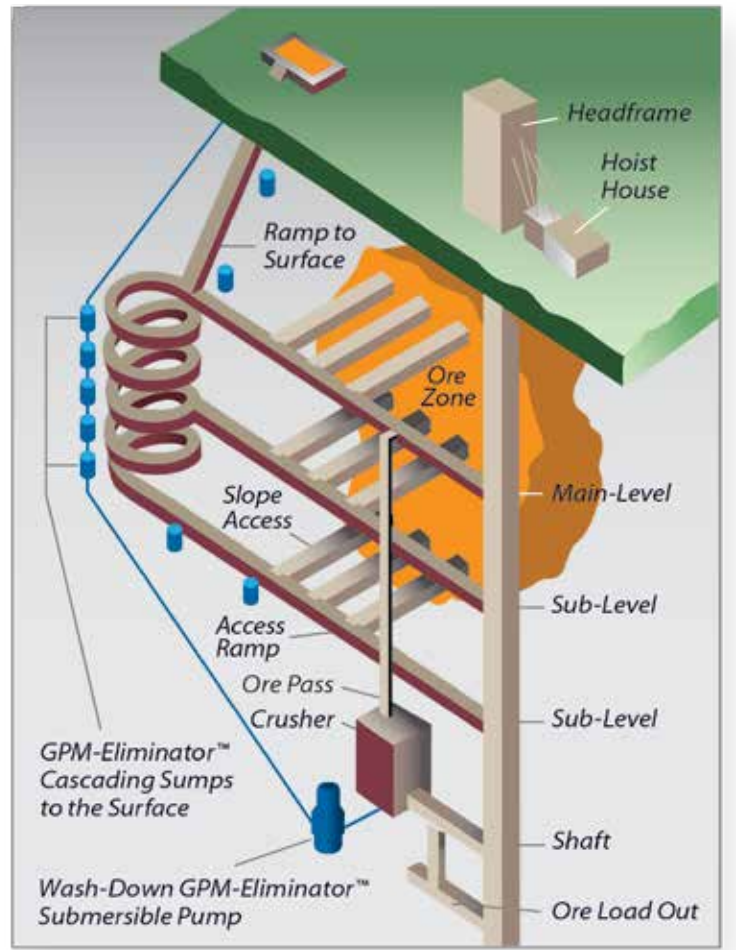
-  GPM-Eliminator™ Submersible Pump
-  GPM Engineered Booster Pump Station
-  GPM-Eliminator™ Submersible or Extended Shaft Barge Pump



## Open Pit/Quarry - Engineered Solutions



## Underground



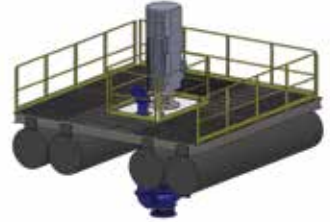
SUBMERSIBLE IN VERTICAL FRAME



 SUBMERSIBLE IN HORIZONTAL FRAME



 BARGE WITH SUBMERSIBLE PUMP



 BARGE WITH EXTENDED SHAFT PUMP



 GPM ENGINEERED BOOSTER PUMP STATION

**For more than 35 years GPM has engineered high-performance dewatering solutions for any application.**

## High-Performance Solutions

Whether dewatering for mining, construction, wastewater processing, or power generation, a solution often includes using a self-priming horizontal pump or a vertical turbine pump mounted on a barge.

Compared with a typical dewatering approach with a vertical turbine pump or an exterior horizontal pump, the GPM dewatering solutions are more:

- **Reliable** – Extended MTBF (Mean Time Between Failures), which translates into a longer service life
- **Flexible** – GPM-Eliminator™ can be completely submerged or barge-mounted
- **Lower maintenance** – Self-priming with no auxiliary equipment required; can handle solids in the water
- **Cost-effective** – Ultra-durability means lower maintenance requirements and fewer unexpected failures, which means a lower lifetime operating cost

Our dewatering solutions are high-performing, reliable and cost-competitive from both an installation and operational standpoint. GPM has the expertise to engineer and install complete custom dewatering systems to handle any application.

## World's Toughest Pumps

At the heart of the innovative GPM approach to dewatering is the GPM-Eliminator™, a submersible, self-priming pump. The GPM-Eliminator™ product line is designed to withstand abrasive and abusive applications, with:

- **28% high chrome or CD4MCu (duplex stainless steel) wet-end construction for extended durability**
- **Class H winding insulation protecting the motor if the pit runs dry**
- **Double mechanical seal in Mobil Synturion 6 fluid for long, reliable life**
- **Oversized pump shafts and bearings to extend the life of motors and mechanical seals**
- **Custom options like specialized shaft alloys**

GPM-Eliminator™ pumps are backed up by our ironclad performance guarantee. One-hundred percent made in America by American craftsmen.



### Free Dewatering Consultation

*If you need a dewatering solution, contact us today to schedule a comprehensive conversation with a GPM dewatering expert. Let's set an appointment to visit your site to assess and understand your needs.*

1-800-754-9904

**GPM**  
SOLUTIONS DRIVEN

### **Corporate Headquarters**

4432 Venture Avenue

Duluth, MN 55811

218-722-9904

### **Bismarck, ND Office**

2792 East Broadway Avenue

Bismarck, ND 58501

701-222-3760

### **Billings, MT Office**

1430 Country Manor Boulevard, Suite 1

Billings, MT 59102

406-850-3099

### **MSP Sales & Service Center**

14608 Felton Court, Suite 103

Apple Valley, MN 55124

952-683-1294



4432 Venture Avenue

Duluth, Minnesota 55811

218-722-9904

1-800-754-9904

**[www.gpmco.com](http://www.gpmco.com)**



**Made in the USA, means**

**made in the USA.** Our OEM

GPM-Eliminator™ pumps

are made with USA parts, manufactured by USA companies and assembled by USA workers. When you specify a GPM pump, it's the All-American thing to do.

**WE DELIVER  
SOLID PUMPING  
SOLUTIONS.**