



## Vertical C-Face Series Pumps

### DURABLE. RELIABLE. DEPENDABLE

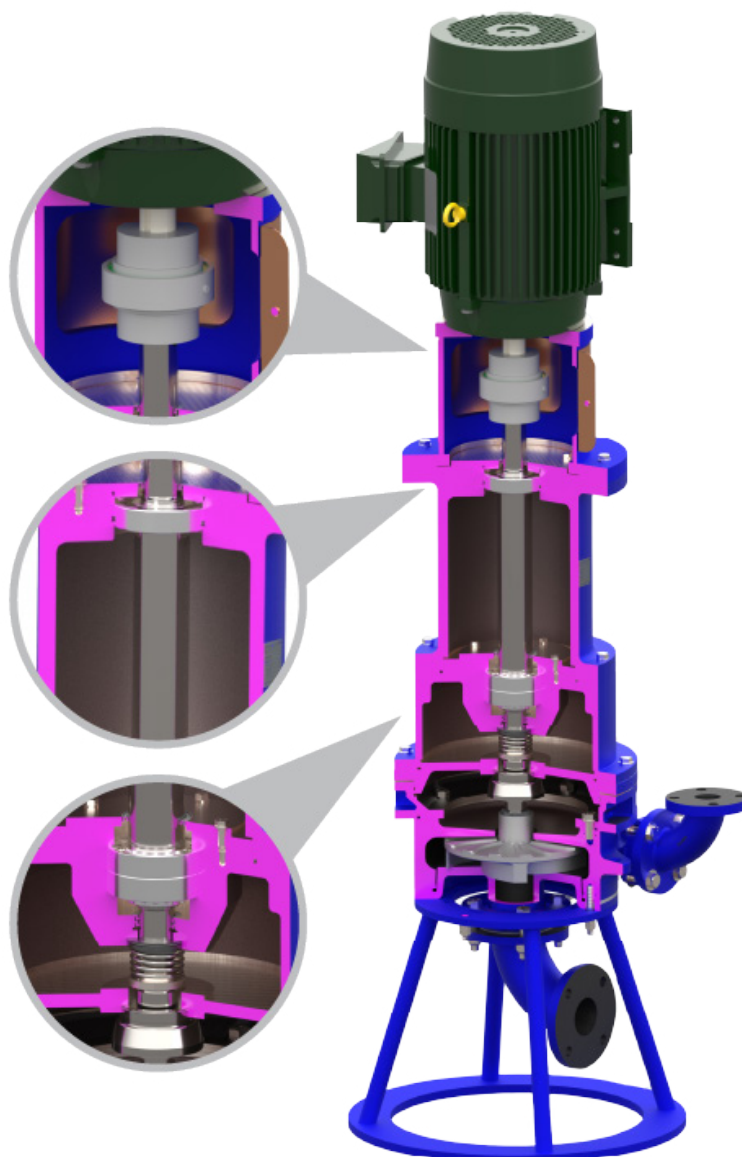
The GPM-Eliminator™ Vertical C-Face pumps use the same Made Tough™ design to handle severe slurry applications with a smaller installation footprint when dealing with space constraints. For areas prone to flooding, the Vertical C-Face GPM-Eliminator is built in a Monobloc style with an amphibious submersible motor available for areas prone to flooding, and to keep the pump above flood water levels, the pump is configured on a stand.

### Design Features Include:

- Large diameter shaft to increase seal and bearing life with minimal shaft deflection
- Heavy-duty outboard SLC series slurry mechanical seal
- Abrasion-resistant and corrosion-resistant seal components
- SiC vs. SiC inboard mechanical seal
- Permanently lubricated mechanical seal reservoir for added lubrication and cooling
- Semi-open and closed impeller options are available
- Large material thicknesses to maximize service life

### Advantages:

- No seal flush required
- No adjustments needed during seal life
- No packing required
- Eliminates motor alignment issues
- Run dry capable
- Permanently lubricated bearings
- Increased MTBF
- Made tough to handle severe slurry applications
- Smaller install footprint when dealing with space constraints



# GPM Eliminator™

MADE TOUGH



## Designed to Fit Any Application

The Vertical C-Face GPM-Eliminator series can be used in any application in any industry where high levels of abrasion resistance and durability are required. Additionally, this GPM-Eliminator configuration saves ground space for areas with limited floor space.

### Typical Applications:

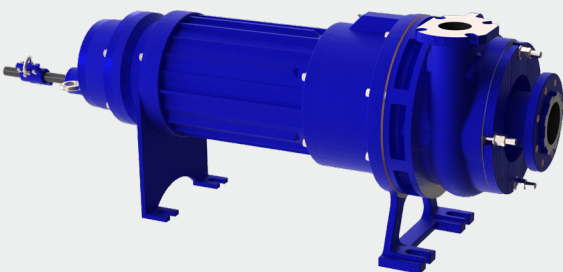
- Clarifier underflow
- Tank recirculation
- Lime transfer
- Ash transfer
- FGD process pumps
- Thickener sludge
- Scrubber recirculating water
- Tailings
- Recycled paper cleaner
- Mill Scale
- Coal Prep
- Cyclone feed

### Other Available Options

- Monobloc style with amphibious submersible motor available for areas prone to flooding
- 28% high chrome, CD4MCu, and 316SS construction options
- XP-rated motor for classified areas
- 2" to 8" discharge sizes
- Flows up to 6000gpm
- Heads up to 300'

### MonoBloc Configurations Available:

Does your application regularly flood? The GPM-Eliminator™ MonoBloc Pump configuration has a submersible-rated motor to handle contact with water with ease. There is no more worrying about alignment issues because it's not the standard horizontal configuration. These pumps are mounted on a stand or two feet and a baseplate.



### Have Additional Questions?

If you have additional questions or want to learn more about the Vertical C-Face or MonoBloc style pumps, visit our website at [www.gpmco.com/contact/](http://www.gpmco.com/contact/) or call our Duluth, MN office at 218-722-9904.

### Who is GPM?

We don't just define ourselves as experts; we're dedicated collaborators. Our mission is to work hand in hand with you and your team to ensure we deliver the correct pump or pump system.